

Redemptive Education NEWS



Climbing trees, keeping bees, learning ABC's



FROM THE PRESIDENT

Wind from the Sea: essays

"Music is a powerful entry point to our minds and hearts. It provides a swift, smooth pathway to fueling our meditations. It follows that cultivating in our children a love and appreciation for beautiful music in a variety of genres, with melody, harmony and lyric that convey truth and grace, whether by sound or by text, is a natural way to edify their interior person."
 --Essay #4, [Wind from the Sea](#), by Amy Imbody.



Amy E. Imbody

[READ MORE >](#)

Lithuanian ministry

Launching a Redemptive Education school

The Center for Redemptive Education has been providing in-person consultation and professional development to a startup school in Lithuania. A small group of believers in this formerly communist country are preparing to launch a Redemptive Education school this year.

The Lithuanian teachers write, "Thank you for prayers. Thanks to God for Redemptive Education. It's such a joy to be part of it. Heidi was amazing teacher."

Please pray for their effectiveness and protection.

In the pictures at left, Lithuanian teachers are actively learning some of Redemptive Education's experiential teaching methods.



[SUPPORT >](#)

MEET OUR NEW TEACHERS AND STAFF



Janine Laurine
Programs Administrator

Janine holds an undergraduate degree in Early Childhood Education from Milligan University. She taught kindergarten and first grade in the public school system and then homeschooled her four children for 15 years.

[BIO >](#)



Sarah Curry
2nd-3rd grades

After graduating from Wheaton College (IL) with a degree in English, Sarah has spent 25 years moving around the country as a military spouse and teaching in Christian schools and homeschool tutorial programs.

[BIO >](#)



Bonnie Gibson
6th-8th grades

Bonnie holds a Bachelor of Science degree from Appalachian State University. She has led comprehensive, high-adventure camp programming focused on skill development for over 1,500 children.

[BIO >](#)

Camp is coming in June--sign up now!

JUNE 3-7, 10-14 - ANNANDALE, VA

Choose one or both sessions

Kindergarten through third grade

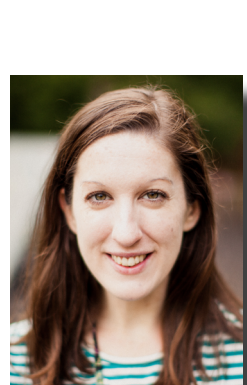
Fourth through sixth grade



KRISTEN TAMORIS (K-3rd)

FEATURING:

- Nature science
- Art
- Music
- Drama
- Cooking
- Games



TESS QUINN (4th-6th)



[READ MORE >](#)

[REGISTER >](#)

9th-12th grade Canopy classes planned

A four-year curriculum is currently under development for a 9th-12th grade [Canopy](#) program, planned to begin in September 2025. The Canopy program will be four days a week and will feature an integral curriculum and internships. More details coming; contact info@RedemptiveEducation.org with any questions or comments.

[CANOPY PROGRAM](#)



2024-25 enrollment is filling up!

ACT NOW--SOME CLASSES ALREADY FULL

With several Annandale, Virginia campus program classes having just one or no openings left, if you have not yet registered and enrolled your child(ren), now is the time to do so.

1. [Apply](#) (new families only).
2. [Interview](#) (new families only).
3. [Register](#) (accepted & returning families).
4. Pay first tuition invoice.



TEACHER CERTIFICATION

Hone your teaching skills and learn Redemptive Education--discounted for enrolled families.

[LEARN MORE](#)

[PROGRAM INFO >](#)

[APPLY >](#)

[REGISTRATION INFO >](#)

[REGISTER '24-25 >](#)

